


FISHWAY STATUS REPORT

Date: 10/3/2015
Inspection Period: 9/27/2015 thru 10/3/2015

All JD Fishways are inspected twice per day during fish season, Mar. 1 - Nov. 30
 Frequent monitoring of the PLC displays in SMF Fisheries Office as necessary.



**US Army Corps
of Engineers**
Portland District

JOHN DAY DAM
 JD/WC Project-Fisheries
 P.O. Box 823
 Rufus, Oregon 97050
 Phone: 541-506-7860

John Day Dam	Inspections	Criteria	Total Number of Inspections:	Temperature:
	Out of Criteria	Limit	13	66 F
NORTH FISHWAY			4 out of 6 AWS pumps available since 12/23/14	
Exit differential	0	≤ 0.5'		
Exit Control weirs	0	High setting	High setting is normal for JDN	
Count station differential	0	≤ 0.3'		
Weir crest depth (DS gauge)	0	1.0' ± 0.1'		
Entrance differential	0	1.0' - 2.0'	AVG 1.5	
SOUTH FISHWAY			3 AWS Turbines in regular service since 2/28/15	
Exit differential	0	≤ 0.5'		
Exit Control weirs	0	Mid Setting	Mid setting is normal for JDS	
Count station differential	0	≤ 0.3'		
Weir crest depth (US gauge)	0	1.0' ± 0.1'		
South entrance differential	0	1.0' - 2.0'	AVG 1.5	
Entrance weir SE1	0	depth (≥ 8')	AVG 8.9	
Collection channel velocity	0	1.5 - 4 fps	AVG 3.06	
N. Entrance PH(Bay 19)differential	0	1.0' - 2.0'	AVG 1.3	
Entrance weir NE1	1	depth (≥ 8')	AVG 8.4	OOO at 7.8' on 9/27, corrected immediately in manual
Entrance weir NE2	1	depth (≥ 8')	AVG 8.4	OOO at 7.8' on 9/27, corrected immediately in manual
JUVENILE PASSAGE			2015 SMF sampling season ended 9/15; the facility will continue in bypass through 11/24	
Forebay/bypass conduit differential	0	4.0' - 5.0'	AVG 4.6	
Submersible traveling screens	0	visual inspect	Camera inspection of all STSs completed by 9/24; no problems were found	
Turbine trashrack drawdown	0	<1.5', wkly	Monthly MU trashracks' raking completed the week of 9/28; minimal debris removed	
Vert barrier screen drawdown	0	<1.5', wkly		
Spill volume	0	Bay2 & 1.6K	Spill season ended on 9/1. Bay 2 open at 1.6 K for JDN attraction, daylight hours only	
Spill pattern	0	per FPP		
Turbine Unit Priority	0	per FPP		
Turbine 1% Efficiency	0	per FPP		

SMOLT MONITORING FACILITY

Operation:

Sampling season ended on 9/15; SMF will continue in bypass for the full flow PIT tags detections until 24 November.
JD Fisheries crew works an abbreviated 18 hrs/7 swing shift schedule as required by FPP.

Maintenance:

Porosity Unit/Separator's cleaning/painting started on 9/16 and is ongoing by JD Structural painter assisted by Fisheries.

Research:

None

Fallbacks: AVG: MAX: 0 MIN: 0

OTHER JOHN DAY ISSUES:

Birds :

see the Avian Numbers tab. We report all species and locations, but in reality only gulls in the tailrace BRZ are relevant at JD.

Avian Lines 52 snapped on approx. 8/28/15. Avian line #45 broke on 8/2/15 Total snapped lines = 9 ---- 116 lines remain

The following avian lines have snapped this season and are out of commission: 44, 45, 46, 52, 55, 56, and 60.

Lines 25 and 26 have been missing since 2013; their re-install contract was awarded on 9/30/15 !

Operations:

JD North Fishway in regular service; 5 out of 6 AWS pumps are available. Repair work on pump 4 continues; pump 3 has vibration issues and should be the last last in service.

JD South Fishway in regular service with 3 AWS Turbines; it is meeting the optimal FPP criteria.

MU Gatewell Drawdowns: Differentials are checked Wednesdays and Sundays; all gatewells were in criteria.

Maintenance:

Underwater STS camera device's repair completed on 9/15 by JD Electrical.

JD North AWS pumps: four out of total six are available. Repair of AWS pump # 4 by a contractor started on 1/26 & is ongoing.

Calibration: All gauges/ sensors are within the criteria of 0.3' .

Research:

2015 Adult Fish Counting by Normandeau Associates commenced on 1 April, 2015 and will continue daily through 1 November.

U of I adult lamprey collection/ PIT tagging continues through 10/2. 331 lamprey have been tagged and released into SNR (upstream of ICH) so far this year.

Dam angling to remove NPM from JD PH tailrace, by a crew from Washington F&W underway. 2,808 season total as of 8/31/15.

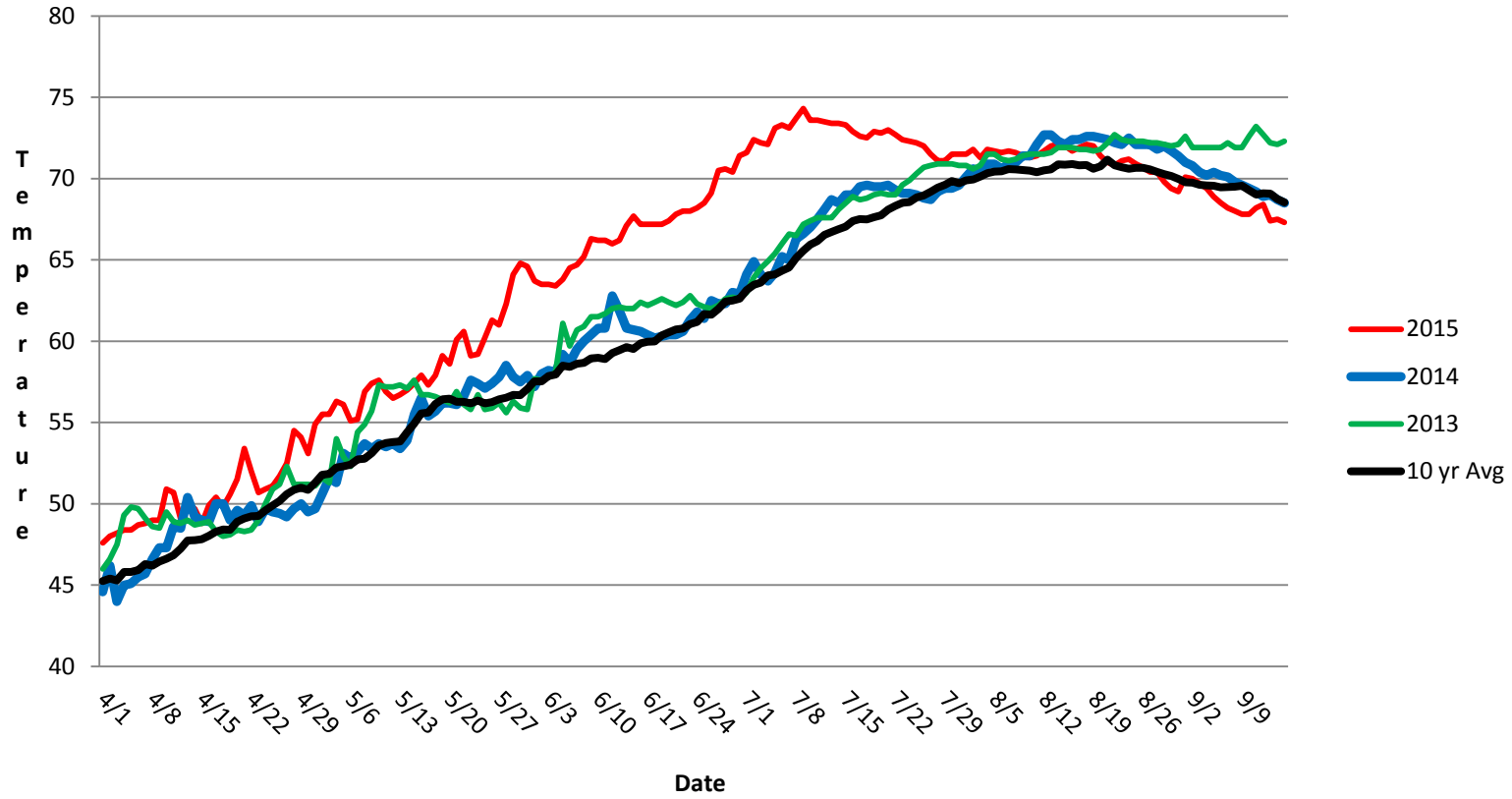
Proposal by PSMFC to install Adult PIT antennas at both JD Fishways is pending; possible installation during the next winter maintenance season 2015/16.

JD North LPS' monitoring season ended on 9/17; LPS was shut down and dewatered that day.

Kevin Moynahan
OPM John Day/Willow Creek Project

Date: October 3, 2015

JDA SMF Water Temp



JDA Collection Channel Velocity

Date #####

By: MDL

Bay(s)	Time	Sec.	Velocity (f/s)
0-2	1:17	77	2.34
2 - 4	2:15	135	3.10
4 - 6	3:18	198	2.86
6 - 8	4:22	262	2.81
8 - 10	5:23	323	2.95
10 - 12	6:20	380	3.16
12 - 14	7:24	444	2.81
14 - 16	8:20	500	3.21
16 - 18	9:02	542	4.29
			3.06

JDA Bird Counts: 9/20/15 to 9/26/15

F(1): Forage AM survey F(2): Forage PM Survey NF(1): Non-Forage AM Survey NF(2): Non-Forage PM Survey

Date	Zone	Gulls				Cormorant				Caspian tern				White Pelican				Grebe				Total
		F(1)	F(2)	NF(1)	NF(2)	F(1)	F(2)	NF(1)	NF(2)	F(1)	F(2)	NF(1)	NF(2)	F(1)	F(2)	NF(1)	NF(2)	F(1)	F(2)	NF(1)	NF(2)	
27-Sep	PHFB	0	0	0	0	0	0	0	0	0	0	0	0	0	0	0	0	0	3	0	36	39
27-Sep	SWFB	0	0	0	13	0	0	0	0	0	0	0	0	0	0	0	0	0	0	0	0	13
27-Sep	PH1	0	4	0	0	0	1	0	0	0	0	0	0	0	0	0	0	0	0	0	0	5
27-Sep	PH2	0	0	0	0	0	0	0	0	0	0	0	0	0	0	0	0	0	0	0	0	0
27-Sep	PH3	0	3	0	0	0	0	0	0	0	0	0	0	0	0	0	0	0	0	0	0	3
27-Sep	SW1	0	0	0	0	0	0	0	0	0	0	0	0	0	0	0	0	0	0	0	0	0
27-Sep	SW2	0	0	0	0	0	1	0	0	0	0	0	0	0	0	0	0	0	0	0	0	1
27-Sep	SW3	0	0	0	0	0	0	0	36	0	0	0	0	0	0	0	0	0	0	0	0	36
Avg/Survey		4	7	1	18	0	0	0	0	0	0	0	2	18			97					
28-Sep	PHFB	0	0	0	7	0	0	0	0	0	0	0	0	0	0	0	0	0	9	0	20	36
28-Sep	SWFB	0	0	0	1	0	0	0	0	0	0	0	0	0	0	0	0	0	0	0	0	1
28-Sep	PH1	0	4	0	0	0	2	0	0	0	0	0	0	0	0	0	0	0	0	0	0	6
28-Sep	PH2	0	0	0	0	0	0	0	0	0	0	0	0	0	0	0	0	0	0	0	0	0
28-Sep	PH3	0	0	0	0	0	0	0	0	0	0	0	0	0	0	0	0	0	0	0	0	0
28-Sep	SW1	0	0	0	0	0	0	0	0	0	0	0	0	0	0	0	0	0	0	0	0	0
28-Sep	SW2	0	0	0	0	0	0	0	0	0	0	0	0	0	0	0	0	0	0	0	0	0
28-Sep	SW3	0	0	0	0	0	0	0	35	0	0	0	0	0	0	0	0	0	0	0	0	35
Avg/Survey		2	4	1	18	0	0	0	0	0	0	0	5	10			78					
29-Sep	PHFB	0	0	0	5	0	0	0	0	0	0	0	0	0	0	5	0	60	49			119
29-Sep	SWFB	0	0	0	12	1	0	0	0	0	0	0	0	0	0	0	0	0	0			13
29-Sep	PH1	0	0	0	0	1	1	0	0	0	0	0	0	0	0	0	0	0	0			2
29-Sep	PH2	0	0	0	0	0	0	0	0	0	0	0	0	0	0	0	0	0	0			0
29-Sep	PH3	5	7	0	6	0	0	0	17	0	0	0	0	0	0	0	0	0	0			35
29-Sep	SW1	0	0	0	0	0	0	0	0	0	0	0	0	0	0	0	0	0	0			0
29-Sep	SW2	0	0	0	0	0	0	0	0	0	0	0	0	0	0	0	0	0	0			0
29-Sep	SW3	5	0	0	0	0	0	8	0	0	0	0	0	0	0	0	0	0	0			13
Avg/Survey		9	12	2	13	0	0	0	0	0	0	0	3	55			182					
30-Sep	PHFB	0	2	0	0	0	0	0	27	0	0	0	0	0	0	0	0	0	0			29
30-Sep	SWFB	0	0	0	0	0	0	0	0	0	0	0	0	0	0	0	0	0	0			0
30-Sep	PH1	4	1	0	0	0	0	8	0	0	0	0	0	0	0	0	0	0	0			13
30-Sep	PH2	0	0	0	0	0	0	0	0	0	0	0	0	0	0	0	0	0	0			0
30-Sep	PH3	0	0	0	0	0	0	0	0	0	0	0	0	0	0	0	0	0	0			0
30-Sep	SW1	0	1	0	0	0	0	0	0	0	0	0	0	0	0	0	0	0	0			1
30-Sep	SW2	0	0	0	0	0	0	0	0	0	0	0	0	0	0	0	0	0	0			0
30-Sep	SW3	0	0	0	0	0	0	0	28	0	0	0	0	0	0	0	0	0	0			28
Avg/Survey		4	0	0	32	0	0	0	0	0	0	0	0	0			71					

JDA Bird Counts: 9/27/15 to 10/3/15

F(1): Forage AM survey F(2): Forage PM Survey NF(1): Non-Forage AM Survey NF(2): Non-Forage PM Survey

Date	Zone	Gulls				Cormorant				Caspian tern				White Pelican				Grebe				Total
		F(1)	F(2)	NF(1)	NF(2)	F(1)	F(2)	NF(1)	NF(2)	F(1)	F(2)	NF(1)	NF(2)	F(1)	F(2)	NF(1)	NF(2)	F(1)	F(2)	NF(1)	NF(2)	
1-Oct	PHFB	0	0	0	0	0	0	24	0	0	0	0	0	0	0	0	0	0	0	66	62	152
1-Oct	SWFB	0	0	24	0	0	0	0	0	0	0	0	0	0	0	0	0	0	0	0	0	24
1-Oct	PH1	4	4	0	0	3	0	0	0	0	0	0	0	0	0	0	0	0	0	0	0	11
1-Oct	PH2	0	0	0	0	0	0	0	0	0	0	0	0	0	0	0	0	0	0	0	0	0
1-Oct	PH3	5	4	0	0	0	0	0	0	0	0	0	0	0	0	0	0	0	0	0	0	9
1-Oct	SW1	0	0	0	0	0	0	0	0	0	0	0	0	0	0	0	0	0	0	0	0	0
1-Oct	SW2	0	0	0	0	0	0	0	0	0	0	0	0	0	0	0	0	0	0	0	0	0
1-Oct	SW3	0	0	0	0	0	0	38	63	0	0	0	0	0	0	0	0	0	0	0	0	101
<i>Avg/Survey</i>		9		12		2		63		0		0		0		0		0		64		297
2-Oct	PHFB	0	0	36	0	0	0	0	0	0	0	0	0	0	0	0	0	0	0	48	70	154
2-Oct	SWFB	0	0	31	0	0	0	0	0	0	0	0	0	0	0	0	0	0	0	0	0	31
2-Oct	PH1	3	1	0	0	0	1	0	0	0	0	0	0	0	0	0	0	0	0	0	0	5
2-Oct	PH2	0	0	0	0	0	0	0	0	0	0	0	0	0	0	0	0	0	0	0	0	0
2-Oct	PH3	1	6	0	0	0	0	0	0	0	0	0	0	0	0	0	0	0	0	0	0	7
2-Oct	SW1	0	0	0	0	0	0	0	0	0	0	0	0	0	0	0	0	0	0	0	0	0
2-Oct	SW2	0	0	0	0	0	0	0	0	0	0	0	0	0	0	0	0	0	0	0	0	0
2-Oct	SW3	0	0	0	0	0	0	22	27	0	0	0	0	0	0	0	0	0	0	0	0	49
<i>Avg/Survey</i>		6		34		1		25		0		0		0		0		0		59		246
3-Oct	PHFB	0	0	23	0	0	0	0	0	0	0	0	0	0	0	0	0	0	0	61	54	138
3-Oct	SWFB	0	0	0	48	0	0	0	0	0	0	0	0	0	0	0	0	0	0	0	0	48
3-Oct	PH1	0	3	0	0	3	4	0	0	0	0	0	0	0	0	0	0	0	0	0	0	10
3-Oct	PH2	0	0	0	0	0	0	0	0	0	0	0	0	0	0	0	0	0	0	0	0	0
3-Oct	PH3	4	0	0	0	0	0	0	0	0	0	0	0	0	0	0	0	0	0	0	0	4
3-Oct	SW1	0	0	0	0	0	0	0	0	0	0	0	0	0	0	0	0	0	0	0	0	0
3-Oct	SW2	0	0	0	0	0	0	0	0	0	0	0	0	0	0	0	0	0	0	0	0	0
3-Oct	SW3	0	0	0	0	0	0	35	59	0	0	0	0	0	0	0	0	0	0	0	0	94
<i>Avg/Survey</i>		4		36		4		47		0		0		0		0		0		58		294
Totals		Gulls		Cormorant		Caspian tern		White Pelican		Grebe		Total										
		F	NF	F	NF	F	NF	F	NF	F	NF	F	NF									
Weekly Total		71	206	18	427	0	0	0	0	17	526	1265										
<i>Avg/Survey</i>		5	15	1	31	0	0	0	0	1	38	90										

John Day Dam
Avian Zones



John Day Weekly Averages

	Temp:	Secchi:	Fallbacks
Sun	66	6.0	
Mon	66	6.0	
Tues	66	6.0	
Wed	66	6.0	
Thur	66	6.0	
Fri	66	6.0	
Sat	66	6.0	
AVG:	66	AVG: 6.0	AVG
			MAX 0
			MIN 0

	NE1	NE2	S.Ent	SE1	N.Ent	JBS Diff	Bay19
Sun	7.8	7.8	1.5	8.9	1.6	4.6	1.4
Sun	8.0	8.0	1.5	8.9	1.5	4.6	1.4
Mon	8.6	8.6	1.5	9.2	1.4	4.4	1.2
Mon							
Tues	8.7	8.7	1.6	9.0	1.6	4.6	1.2
Tues	9.1	9.1	1.7	8.3	1.6	4.6	1.2
Wed	8.2	8.2	1.5	9.1	1.4	4.5	1.2
Wed	8.5	8.5	1.6	8.1	1.5	4.6	1.2
Thur	8.6	8.6	1.6	9.1	1.5	4.5	1.3
Thur	8.5	8.5	1.5	9.2	1.7	4.5	1.2
Fri	8.3	8.3	1.6	9.0	1.5	4.5	1.4
Fri	8.1	8.1	1.5	9.4	1.6	4.5	1.5
Sat	8.4	8.4	1.5	9.0	1.5	4.6	1.3
Sat	8.4	8.4	1.5	9.1	1.6	4.6	1.3
AVG:	8.4	8.4	1.5	8.9	1.5	4.5	1.3